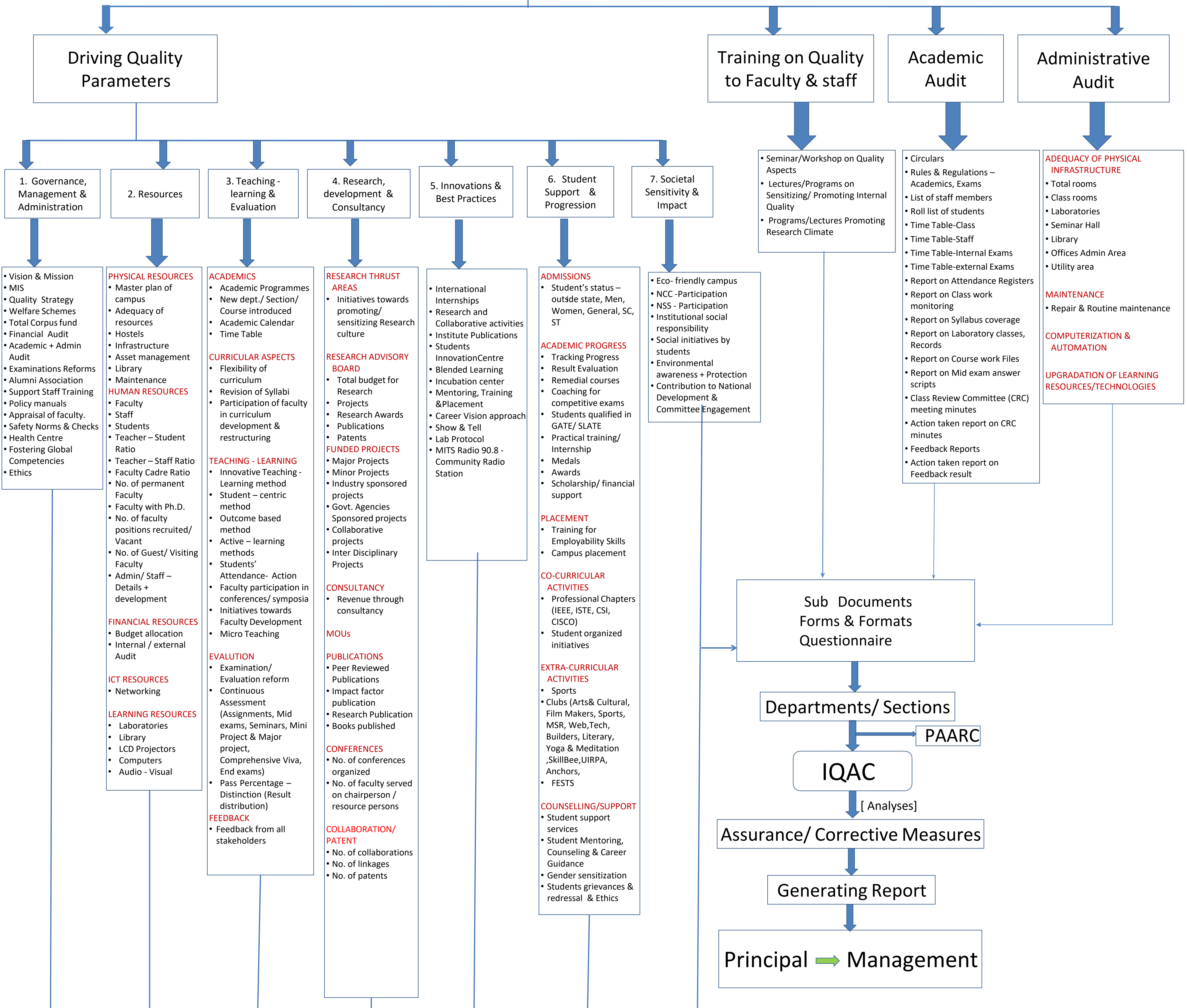


MADNANPALLE INSTITUTE OF TECHNOLOGY & SCIENCE

Internal Quality Assurance Cell



IQAC



Driving Quality Parameters

- 1. Governance, Management & Administration
- 2. Resources
- 3. Teaching-learning & Evaluation
- 4. Research, development & Consultancy
- 5. Innovations & Best Practices
- 6. Student Support & Progression
- 7. Societal Sensitivity & Impact

- Vision & Mission
- MIS
- Quality Strategy
- Welfare Schemes
- Total Corpus fund
- Financial Audit
- Academic + Admin Audit
- Examinations Reforms
- Alumni Association
- Support Staff Training
- Policy manuals
- Appraisal of faculty.
- Safety Norms & Checks
- Health Centre
- Fostering Global Competencies
- Ethics

- PHYSICAL RESOURCES**
- Master plan of campus
 - Adequacy of resources
 - Hostels
 - Infrastructure
 - Asset management
 - Library
 - Maintenance
- HUMAN RESOURCES**
- Faculty
 - Students
 - Teacher – Student Ratio
 - Teacher – Staff Ratio
 - Faculty Cadre Ratio
 - No. of permanent Faculty
 - Faculty with Ph.D.
 - No. of faculty positions recruited/ Vacant
 - No. of Guest/ Visiting Faculty
 - Admin/ Staff – Details + development
- FINANCIAL RESOURCES**
- Budget allocation
 - Internal / external Audit
- ICT RESOURCES**
- Networking
- LEARNING RESOURCES**
- Laboratories
 - Library
 - LCD Projectors
 - Computers
 - Audio - Visual

- ACADEMICS**
- Academic Programmes
 - New dept./ Section/ Course introduced
 - Academic Calendar
 - Time Table
- CURRICULAR ASPECTS**
- Flexibility of curriculum
 - Revision of Syllabi
 - Participation of faculty in curriculum development & restructuring
- TEACHING - LEARNING**
- Innovative Teaching - Learning method
 - Student – centric method
 - Outcome based method
 - Active – learning methods
 - Students' Attendance- Action
 - Faculty participation in conferences/ symposia
 - Initiatives towards Faculty Development
 - Micro Teaching
- EVALUATION**
- Examination/ Evaluation reform
 - Continuous Assessment (Assignments, Mid exams, Seminars, Mini Project & Major project, Comprehensive Viva, End exams)
 - Pass Percentage – Distinction (Result distribution)
- FEEDBACK**
- Feedback from all stakeholders

- RESEARCH THRUST AREAS**
- Initiatives towards promoting/ sensitizing Research culture
- RESEARCH ADVISORY BOARD**
- Total budget for Research
 - Projects
 - Research Awards
 - Publications
 - Patents
- FUNDED PROJECTS**
- Major Projects
 - Minor Projects
 - Industry sponsored projects
 - Govt. Agencies Sponsored projects
 - Collaborative projects
 - Inter Disciplinary Projects
- CONSULTANCY**
- Revenue through consultancy
- MOUs**
- PUBLICATIONS**
- Peer Reviewed Publications
 - Impact factor publication
 - Research Publication
 - Books published
- CONFERENCES**
- No. of conferences organized
 - No. of faculty served on chairperson / resource persons
- COLLABORATION/ PATENT**
- No. of collaborations
 - No. of linkages
 - No. of patents

- International Internships
- Research and Collaborative activities
- Institute Publications
- Students Innovation Centre
- Blended Learning
- Incubation center
- Mentoring, Training & Placement
- Career Vision approach
- Show & Tell
- Lab Protocol
- MITS Radio 90.8 - Community Radio Station

- ADMISSIONS**
- Student's status – outside state, Men, Women, General, SC, ST
- ACADEMIC PROGRESS**
- Tracking Progress
 - Result Evaluation
 - Remedial courses
 - Coaching for competitive exams
 - Students qualified in GATE/ SLATE
 - Practical training/ Internship
 - Medals
 - Awards
 - Scholarship/ financial support
- PLACEMENT**
- Training for Employability Skills
 - Campus placement
- CO-CURRICULAR ACTIVITIES**
- Professional Chapters (IEEE, ISTE, CSI, CISCO)
 - Student organized initiatives
- EXTRA-CURRICULAR ACTIVITIES**
- Sports
 - Clubs (Arts & Cultural, Film Makers, Sports, MSR, Web, Tech, Builders, Literary, Yoga & Meditation, SkillBee, UIRPA, Anchors, FESTS)
- COUNSELLING/SUPPORT**
- Student support services
 - Student Mentoring, Counseling & Career Guidance
 - Gender sensitization
 - Students grievances & redressal & Ethics

- Eco- friendly campus
- NCC -Participation
- NSS - Participation
- Institutional social responsibility
- Social initiatives by students
- Environmental awareness + Protection
- Contribution to National Development & Committee Engagement

Training on Quality to Faculty & staff

- Seminar/Workshop on Quality Aspects
- Lectures/Programs on Sensitizing/ Promoting Internal Quality
- Programs/Lectures Promoting Research Climate

Academic Audit

- Circulars
- Rules & Regulations – Academics, Exams
- List of staff members
- Roll list of students
- Time Table-Class
- Time Table-Staff
- Time Table-Internal Exams
- Time Table-external Exams
- Report on Attendance Registers
- Report on Class work monitoring
- Report on Syllabus coverage
- Report on Laboratory classes, Records
- Report on Course work Files
- Report on Mid exam answer scripts
- Class Review Committee (CRC) meeting minutes
- Action taken report on CRC minutes
- Feedback Reports
- Action taken report on Feedback result

Administrative Audit

- ADEQUACY OF PHYSICAL INFRASTRUCTURE**
- Total rooms
 - Class rooms
 - Laboratories
 - Seminar Hall
 - Library
 - Offices Admin Area
 - Utility area
- MAINTENANCE**
- Repair & Routine maintenance
- COMPUTERIZATION & AUTOMATION**
- UPGRADATION OF LEARNING RESOURCES/TECHNOLOGIES**

Sub Documents Forms & Formats Questionnaire

Departments/ Sections

PAARC

IQAC

[Analyses]

Assurance/ Corrective Measures

Generating Report

Principal → Management

* All the above parameters support guide lines/ requirements of – NAAC/ AICTE/ NBA/NIRF/NEP/MITS Policy